

TileSelect_GUI Read Me File

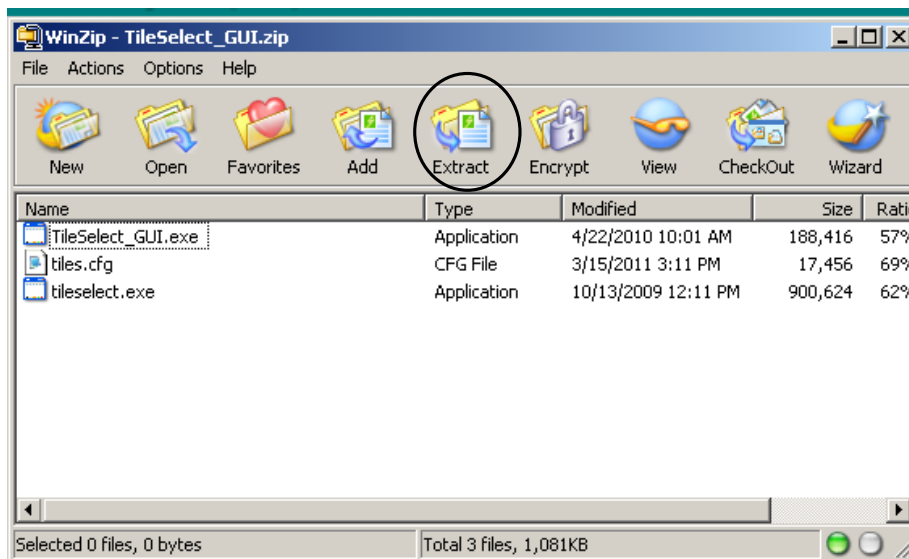
Please Read Before You Begin Using Tile Select Software

To properly use the Tile Select Software the following must be done prior to using the software.

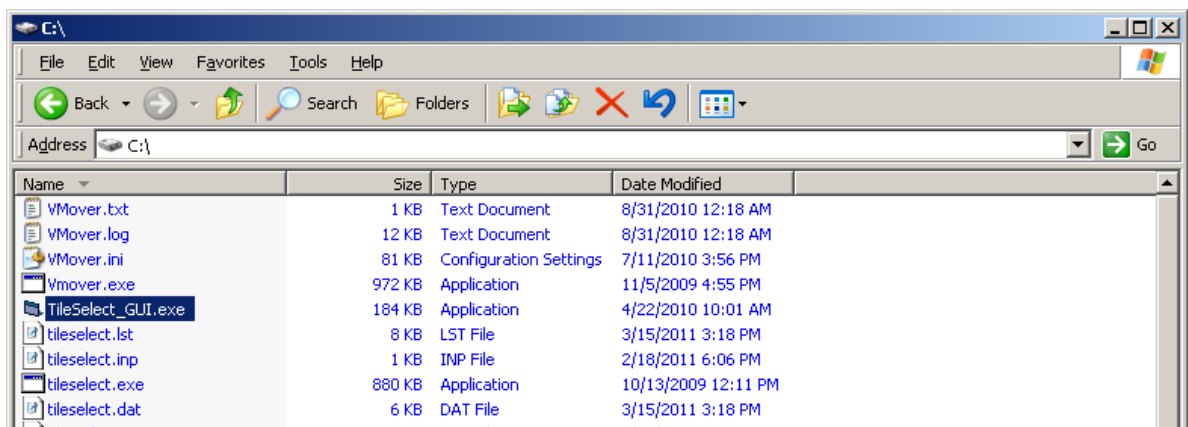
- (1) Select the Tile Select Software Button



- (2) This will open up a zip file window containing 3 files. All 3 files must be “extracted” in order for software to function properly. “Extract” all files to your local hard drive and close the zip file window.



- (3) Open local hard drive and select file: “TileSelect_GUI.exe” to run program.



TileSelect_GUI Read Me File

Purpose:

To indicate the list of MM5 tiles required for a requested delimited geographical area. The limits of the area within the full domain are set using a range of latitude and longitude or a range of indices from the MM5 grid or with the center (with coordinates in latitude and longitude) and the radius of a disc.

TileSelect
File Help

Configuration file information
Configuration file date: 2 August 2011

Specify domain information
Enter a country from your domain: Alaska
Available domains for the selected country:
Domain 42, resolution: 12.000km, year: 2006
Show map for domain 042

Selected domain limits
Lat from 50.3864 N To 76.1184 N
Lon from 165.1644 E To 256.2106 E

Select type of coordinates:
Geodetic (Latitude/Longitude):

LL (degrees) Start
Latitude: 52 N
52 0 0.00
dd mm ss.ss
Longitude: 180.000000 E
180 0 0.00
ddd mm ss.ss

LL (degrees) End
Latitude: 72 N
72 0 0.00
dd mm ss.ss
Longitude: 256 E
256 0 0.00
ddd mm ss.ss

Show tiles in domain
Number of tiles needed for the selected domain: 456
Tile number: 004
Tile number: 005
Tile number: 006
Tile number: 007
Tile number: 008
Tile number: 009
Tile number: 010
Tile number: 011
Tile number: 012

View output file

To order tiles, please send your order form and TileSelect output file to asg@trcsolutions.com

INPUT REQUIRED
Select a country to see listing of available data and domains. Click on Show Map for additional details.

INFORMATIONAL
Hyperlink to the latest configuration file

INFORMATIONAL
Latitude/ Longitude limits for the full domain for selected country.

INPUT REQUIRED
Choose from a selection of several ways to define the area that is required within the domain limits

INPUT REQUIRED
Define a range of latitude and longitude for the area required within the domain limits above

ACTION REQUIRED
Click Button to execute the program and display the list of tiles needed

ACTION REQUIRED
Click Button to create and view file that will be needed for ordering

INFORMATIONAL
Email address where to send the output file